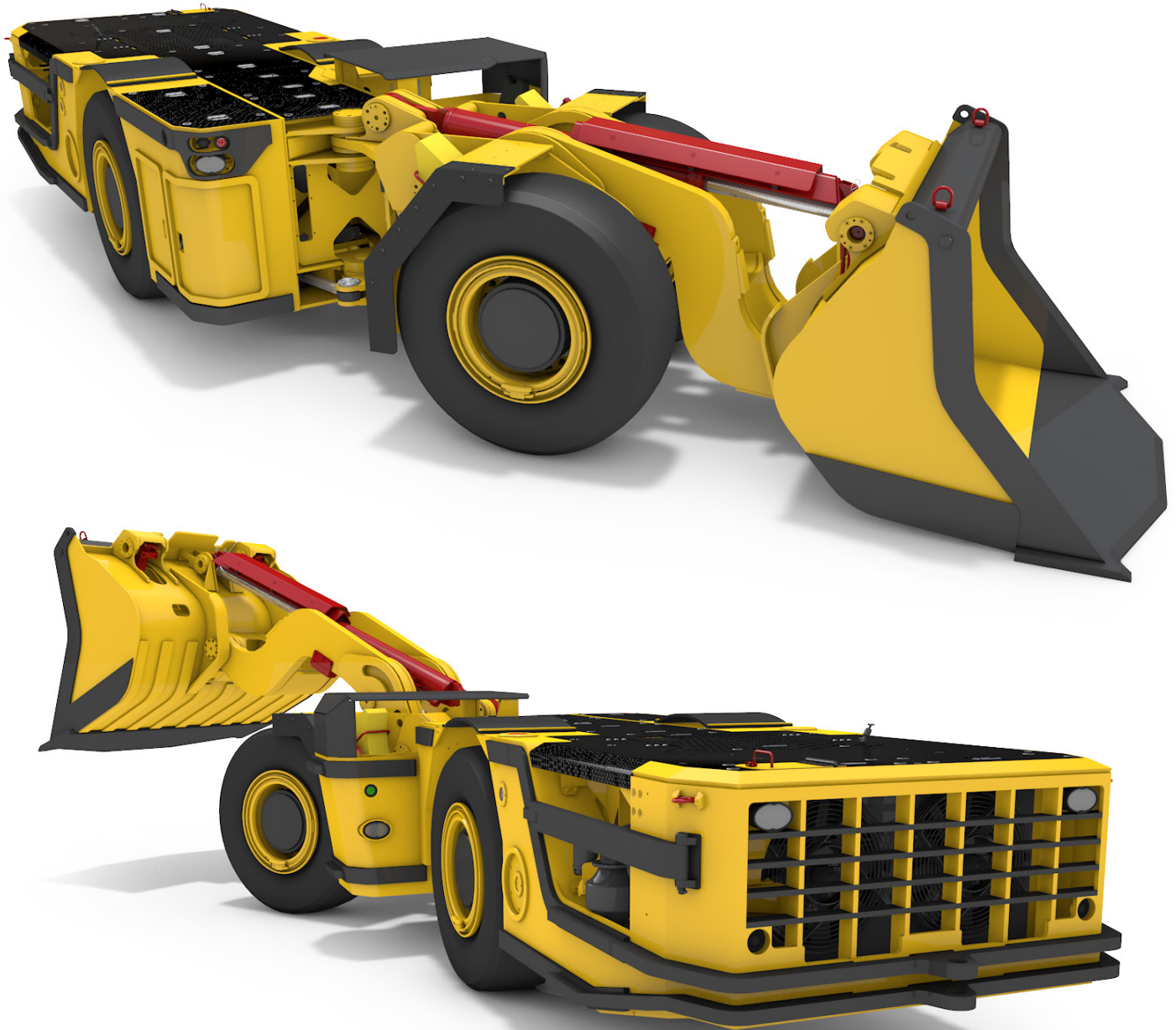


T-Mech
780 LHD LP

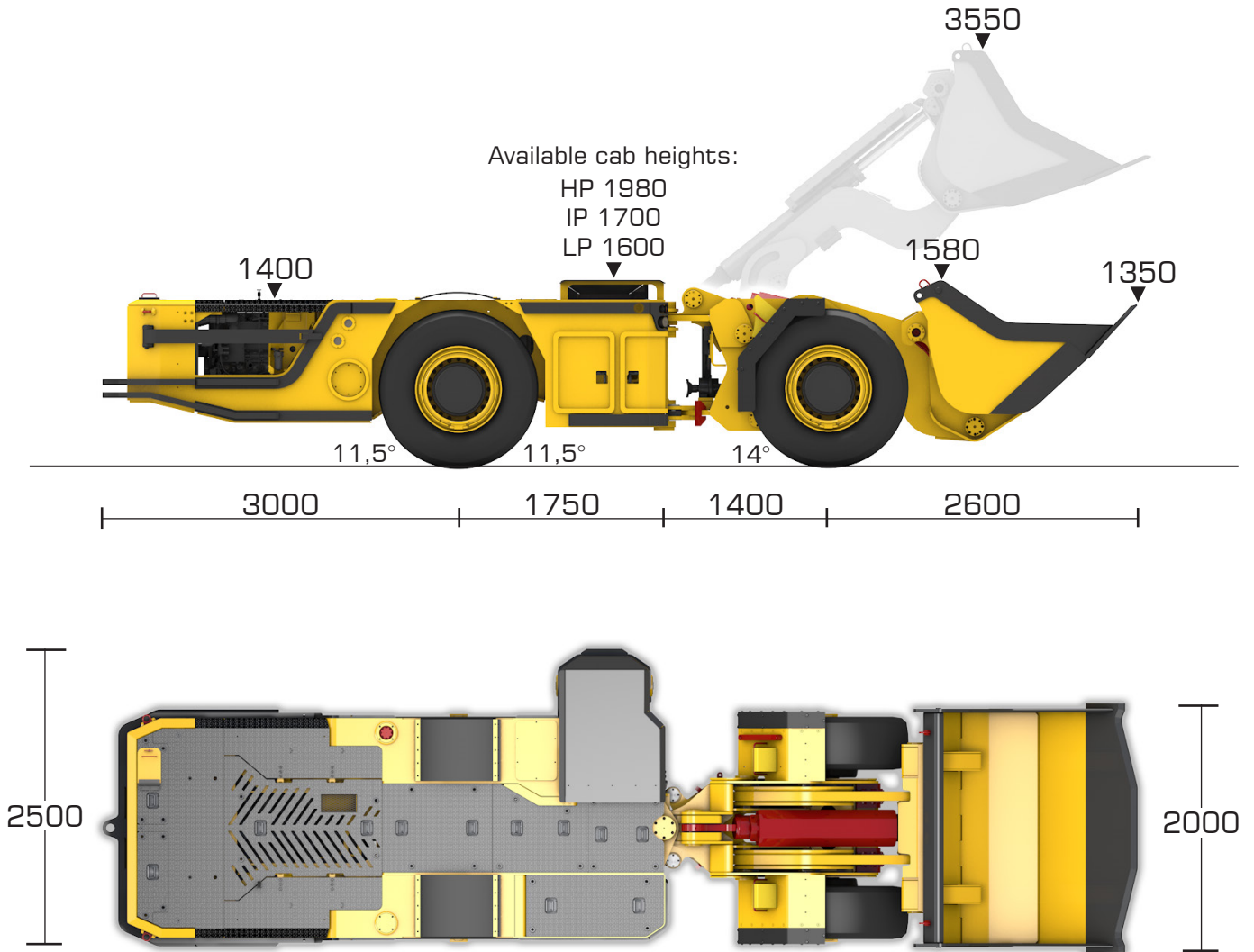


- ▶ TIER III Liquid Cooled Engine Package
- ▶ Superior Performance Of 931Nm @ 1400 Rpm.
- ▶ Bolt On Cockpit - Available in Low, Intermediate and High Profile
- ▶ Components Selected To Offer Maximum Reliability
And Enhanced Productivity
- ▶ Composite Covers And Floor-Up Maintenance Layout.

Contact Details

T-Mech
780 LHD LP

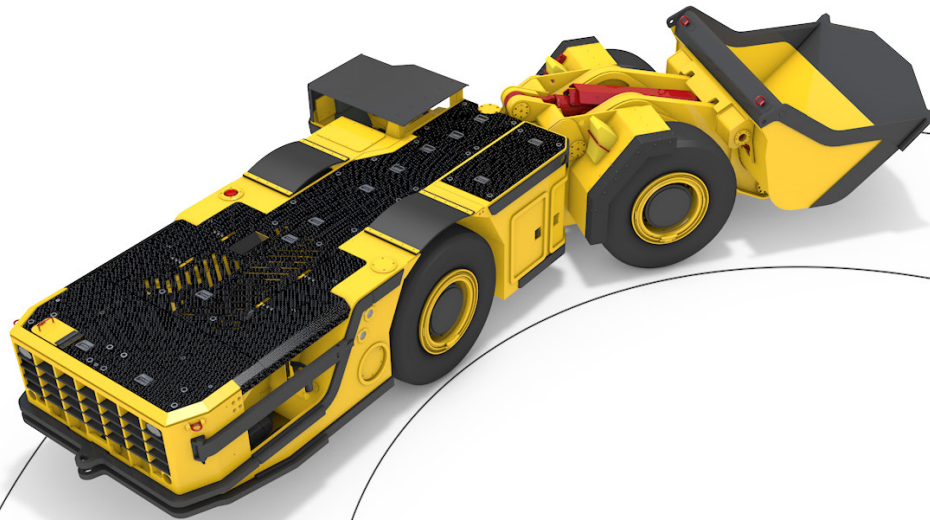
STANDARD UNIT SPECIFICATIONS



Contact Details

T-Mech
780 LHD LP

STANDARD UNIT SPECIFICATIONS



• R6600

• R3900



Low Profile
Cab

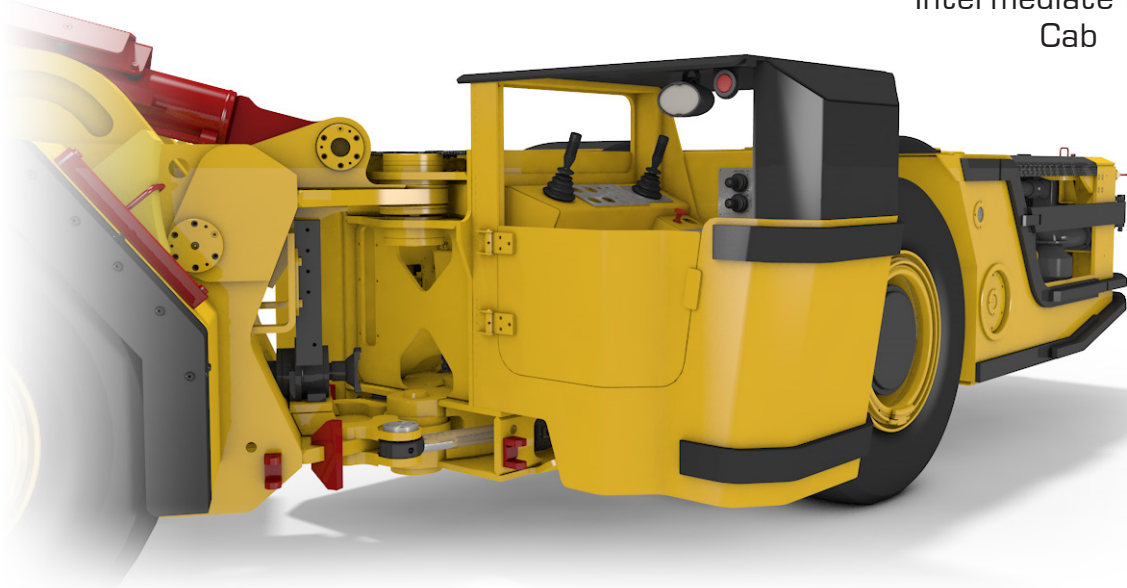
Contact Details

T-Mech
780 LHD LP

STANDARD UNIT SPECIFICATIONS

Also available with Intermediate Profile and
High Profile cabs

Intermediate Profile
Cab



High Profile
Cab



Contact Details

Corner Bergvlei and Crocker Roads, Wadeville Ext. 5
No 1A Union Road, Alberton North
Telephone : (+27) 11 865-8400/1/2/3 OR (+27) 11 724-7820
Telefax : (+27) 11 902-2514 / 902-3704
E-Mail : sales@fermel.co.za
Website : www.fermel.co.za

T-Mech 780 LHD LP

STANDARD UNIT SPECIFICATIONS

General

Envelope Dimensions

Total Length	8750mm
Maximum Width	2500mm
Height	1600mm
Exit Angle	11,5°
Beaching Angles	11,5° & 14°

Operating Weights

Total Operating Weight	16920kg
------------------------	---------

Bucket Motion Times

Boom lift	3.5 sec
Boom lower	4.5 sec
Bucket dump	6 sec
Bucket retract	4.5 sec
Bucket eject	3.5 sec

Maximum tractive effort and driving speeds at GVM

Gear Selection	TE	Speed
1st Gear	164.7 kN	4.3km/hr
2nd Gear	79.3 kN	8.7km/hr
3rd Gear	45.8kN	15km/hr

Chassis

Finite element validation analysis
3 Year Warranty
FOPS and ROPS Certified canopy
Fuel and oil tank bolted to frame

Power Train

Engine

Diesel engine	Cummins QSB 6.7 EPA
Emmission compliance	EPA Tier III, EU Stage 3a
Maximum power output	144kW at 2200 RPM
Maximum torque	931 Nm at 1400 RPM
Number of cylinders	6
Bore/Stroke	107/124mm
Total displacement	6700 cm ³
Cooling system	Water cooled
Maximum engine speed	2300 RPM
Diesel fuel reservoir	240 liter

Cooling System

Type	Block core radiator
Heat rejection	100kW
Air flow	8m ³ /sec
Head tank	45 litres

Transmission

Clark 32 327 series	3 speed intergrated with convertor
Convertor wheel	Clark 273.1
Stall ratio	3.01:1
Gear shift type	Electronic bump shift

Axles

Axle rear	Clark 16D2149 planetary steering axle Bolster mounted with a 10° ossilation
Axle front	Clark 16D2149 planetary axle Rigid mount

Tyres

Tyre Size Front	17.5x25 L5S 32 Ply Mining Tyre
Rims	Heavy duty 3 piece rims with sure lock mechanism

Contact Details

Corner Bergvlei and Crocker Roads, Wadeville Ext. 5
No 1A Union Road, Alberton North
Telephone : (+27) 11 865-8400/1/2/3 OR (+27) 11 724-7820
Telefax : (+27) 11 902-2514 / 902-3704
E-Mail : sales@fermel.co.za
Website : www.fermel.co.za



T-Mech 780 LHD LP

STANDARD UNIT SPECIFICATIONS

Systems

Electrical System

Operating Voltage	12V
Lighting Front	2 x headlights
Lighting Rear	2 x headlights
Marker Lights LED at each vehicle extremity	
Rotating Beacon LED with battery back-up (AMBER)	
Reverse Alarm	
Horn	

Hydraulic System

Brake & Steering	Gear 51cc pump
Bucket and boom	Gear 51cc pump
Brake cooling	Gear 4cc pump
Hydraulic oil reservoir 300 litres	
Pressurized	
Fill via quick coupler connection en return line filter	
Configured for kidney filtration	

Steering

Hydraulic power steering	
Accumulator backup	
Pilot operated joystick control	

Turning Radius

Angle	+/- 35°
Inner	3900mm
Outer	6600mm

Control System

Accelerator	Electronic CAN
Brake	Electronic CAN
Direction control	F N R Electronic
Gear selector	Electronic CAN
On board controller	DANFOSS MC50 or MC88
LED Display	DANFOSS DP600

Brake System

Service Brakes	Hydraulically applied via proportional modulating valve
Emergency Brake Hand Operated	Spring applied hydraulic release
Systems can be independantly tested	
Engine off Brake on	
Accumulator Pressure Low Brakes interlock	
Low Voltage Generation Brakes interlock	
Door Open Brakes interlock	
Neutral Brake	
On board brake override for towing purposes	
SLD (speed limiting device) TM	
SBI (Speed brake interlock) TM	

Ancillary / Optional Equipment

Fire Extinguishers	Fire Supression System
Spare Wheel Assemblies	Engine Protection System
Stop Blocks (Two off)	

Manuals

Distribution

One set of Parts, Operators and Maintenance Manuals. Manuals are also available on CD and will be distributed at the clients request.

Contact Details